



**Prismatic Technologies Limited**

71 C3 Gulberg 3, Lahore



# Introduction to **Prismatic HRMS**

Elevate Your HR Experience with Proven Data-Driven Insights with Prismatic





# Prismatic Human Capital Management System

Exploring Key Features of HR Software Solutions

## 01 Employee Administration

ATS (Recruitment & Onboarding)

Employee Operations

---

## 02 Employee Self Service

Empowering of Requests

---

## 03 Employee Payroll

Automated Payroll (KPIs Inclusion)  
Benefits Management

---

## 04 Time Management

IoT Integration  
Geo Fencing Application

---

## 05 Training & Development

PMS  
Learning Hub

---

## 06 HR Accounting

HR Financial Analytics

---

## 07 Employee Engagement

Surveys  
Chatbot  
Help Desk

---

## 08 HR Analytics & Reporting

Multi Company, Regions, Locations

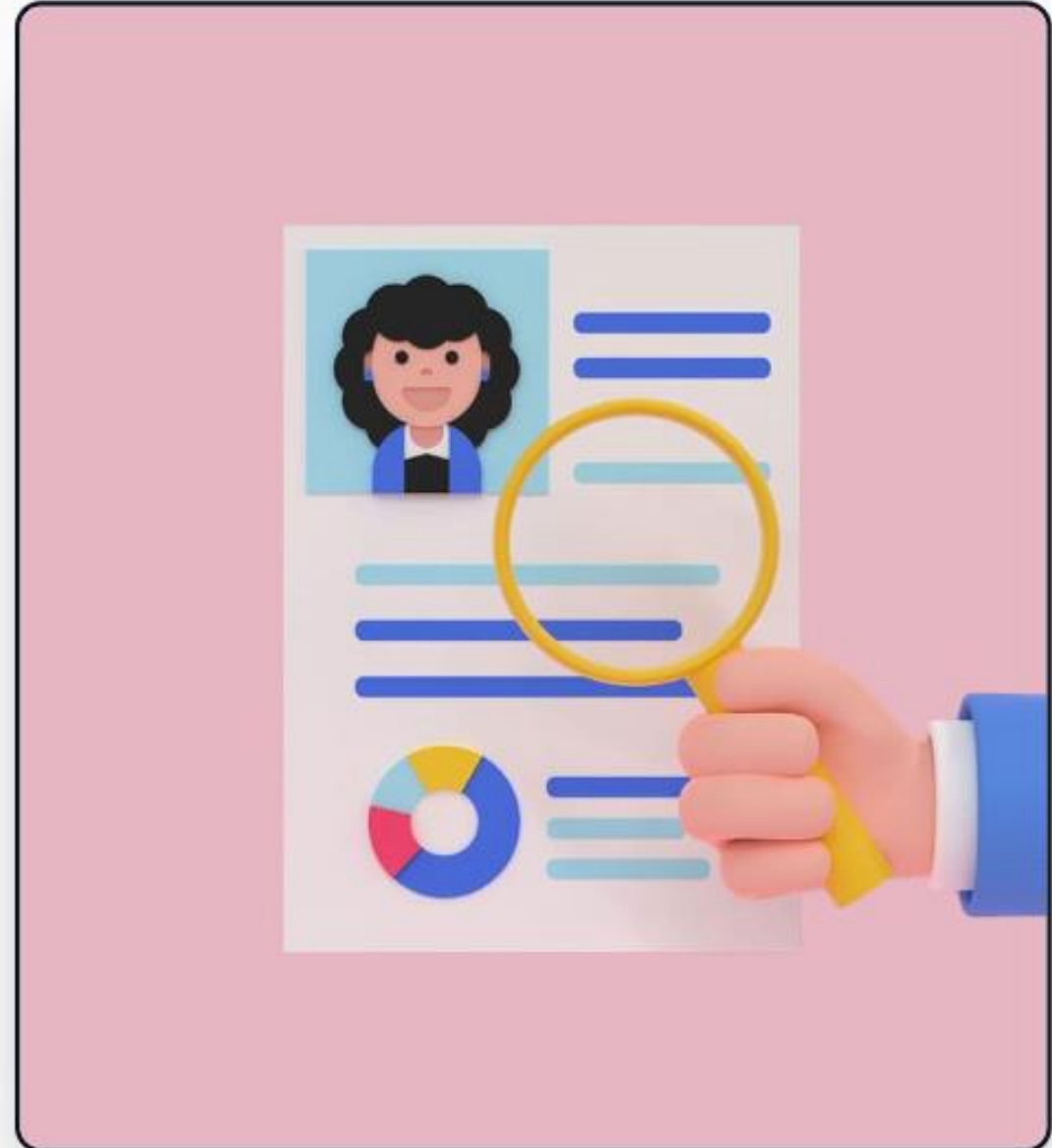
---

### Recruitment and Onboarding

- Application tracking system (ATS)
- Requisition management
- Custom build Screening Tool
- Interview Scheduling
- Employee Evaluations

### Payroll Management

- Automated payroll
- Additions and Benefits
- Full and final settlement
- Statutory and tax compliance
- kPI Based Deductions Management
- Overtime Management
- Funds Management (EOBI, PF, Security Fund, Insurance)



## Recruitment and Onboarding

- Application tracking system (ATS)
- Requisition management
- Custom build Screening Tool
- Interview Scheduling
- Employee Evaluations

## Payroll Management

- Automated payroll
- Additions and Benefits
- Full and final settlement
- Statutory and tax compliance
- kPI Based Deductions Management
- Overtime Management
- Funds Management (EOBI, PF, Security Fund, Insurance)



## Payroll Management

- Automated payroll
- Additions and Benefits
- Full and final settlement
- Statutory and tax compliance
- kPI Based Deductions Management
- Overtime Management
- Funds Management (EOBI, PF, Security Fund, Insurance)

## Performance Management

- Dynamic evaluation frameworks
- Performance appraisal
- Multi rater feedback
- Employee evaluation



## Performance Management

- Dynamic evaluation frameworks
- Performance appraisal
- Multi rater feedback
- Employee evaluation

## Learning Management

- In-house Training & Development
- Course creation and tracking
- Evaluation
- Leaderboard
- Certification

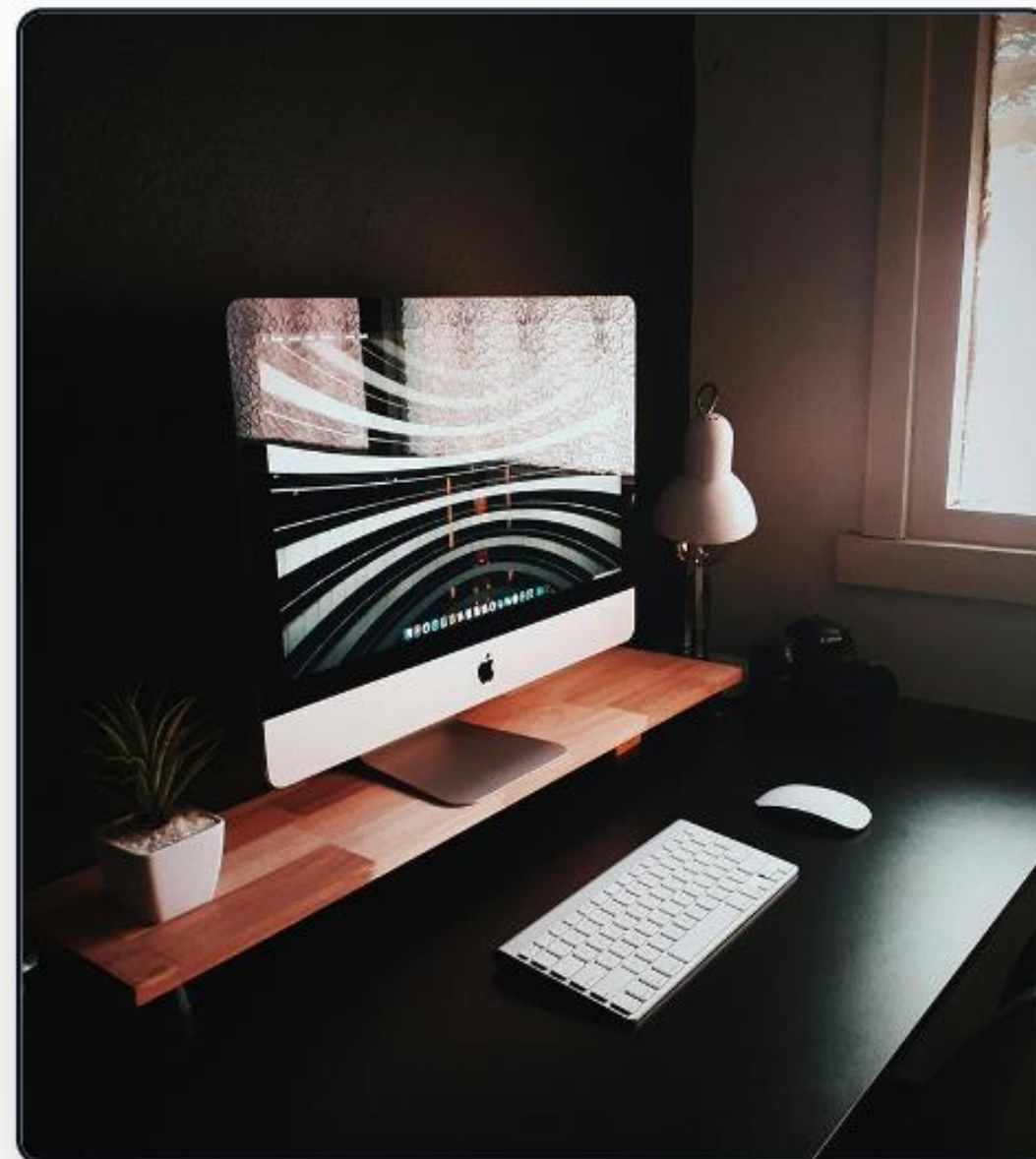


## Learning Management

- In-house Training & Development
- Course creation and tracking
- Evaluation
- Leaderboard
- Certification

## Self Service Portal

- Employee Dashboard
- Loan request
- Advance request
- Leave & work from home request
- Attendance Correction request
- Reimbursement request
- Complaints
- Resource request
- Overtime request
- Events Calender



## Self Service Portal

- Loan request
- Advance request
- Leave request
- Work from Home Request
- Reimbursement Request
- Complaints

## Accounts & Expense Management

- Travel and expense
- Advance claim
- Notifications and reminders
- Expense reclaims
- HR financial analytics



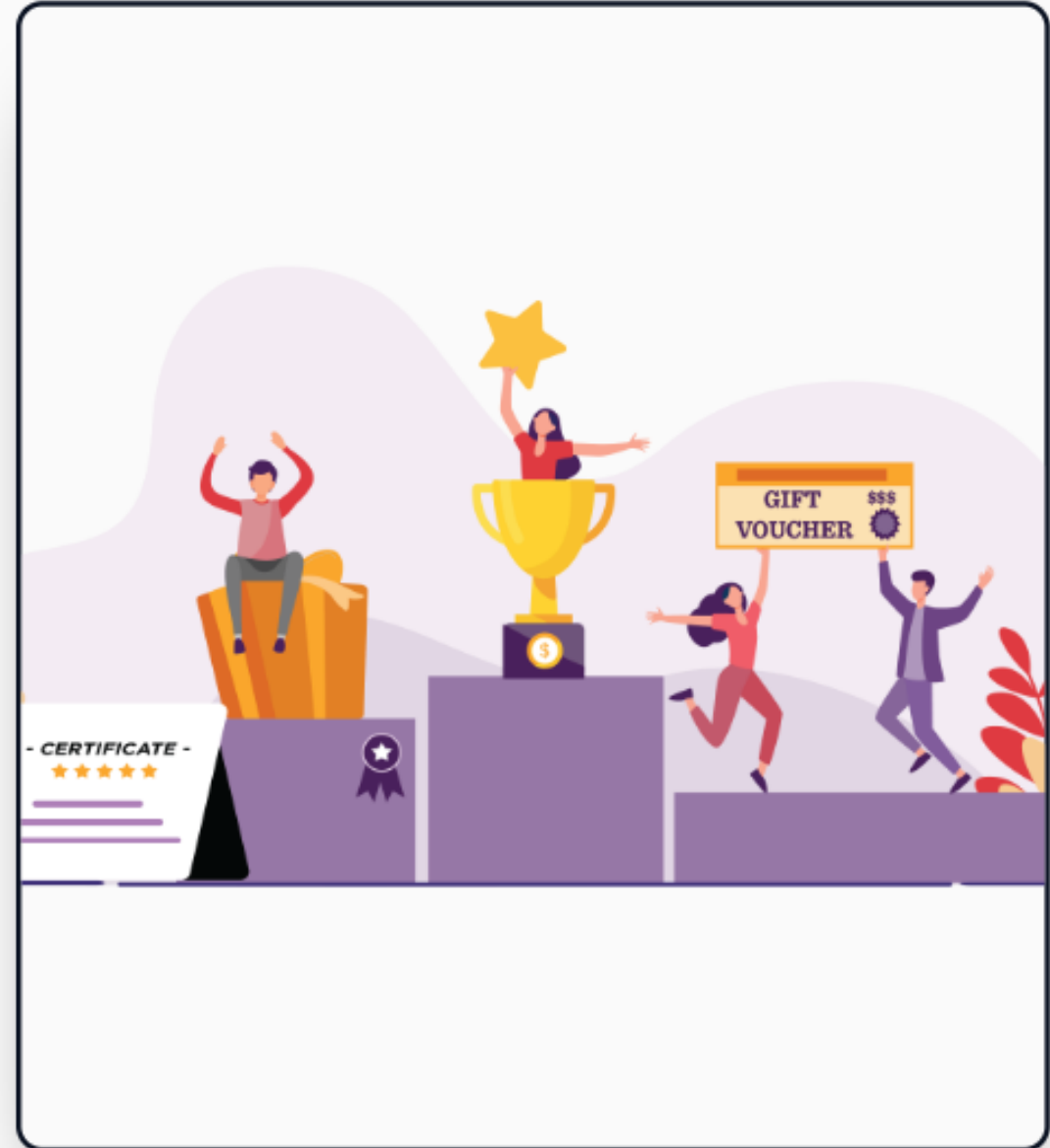


## Accounts & Expense Management

- Travel and expense
- Advance claim
- Notifications and reminders
- Expense reclaims
- HR financial analytics

## Employee Engagement

- Help desk and surveys
- Chatbot
- Rewards and recognition
- SMTP, WhatsApp Integration
- Announcements
- Digital letters



## Employee Engagement

- Help desk and surveys
- Chatbot
- Rewards and recognition
- SMTP, WhatsApp Integration
- Announcements
- Digital letters

## Task Management

- Cross functional team
- Individual task
- Task logs
- Task completion & recognition





## Multi Shift Management

Efficiently schedule, manage, and track multiple shifts to ensure optimal workforce utilization and seamless operations.

---

## Geotagging and Geofencing

Enhance employee accountability and streamline attendance tracking by utilizing location-based services for clock-ins and outs.

---

## Overtime/Undertime Management

Effectively monitor and regulate employee overtime and undertime to control costs and maintain productivity levels.

---

## IoT Integration

Integrate Internet of Things devices to automate data collection, improve accuracy, and enable real-time monitoring of attendance and working hours.

WORKFORCE OPTIMIZATION S...

# Time & Attendance

Optimize Workforce Management with  
Advanced HRMS Software Solutions



HRMS SOLUTIONS EFFICIENCY

# Leave Management

Empower your organization with Asia's most flexible HRMS software solution



## Comprehensive Leave Management

Efficiently manage various leave types, groups, holidays, and track accrual and carryover seamlessly.



## Customizable Leave Types

Tailor leave types to suit your organization's policies and employee requirements for enhanced flexibility.



## Intuitive Dashboard

Access real-time insights and data visualization through a dynamic dashboard for informed decision-making.



## Streamlined Leave Groups

Organize employees into specific leave groups to simplify leave allocation and management processes.



## Efficient Holiday Management

Automate holiday tracking and scheduling to ensure seamless operations and compliance.



# Core HR

Streamline HR processes with an integrated HRMS software solution



01

## Role Management

Efficiently assign roles, responsibilities, and permissions to employees based on their job requirements and organizational structure.



02

## Position Management

Manage and track positions within the company, including job titles, descriptions, and reporting hierarchies for effective workforce planning.



03

## Organizational Hierarchy

Visualize and maintain a clear hierarchy of departments, teams, and reporting relationships to enhance communication and decision-making.



04

## Employee Data Management

Centralize all employee information, including personal details, performance evaluations, and training records for easy access and secure data management.



05

## Employee Movement

Track employee movements such as transfers, promotions, and terminations accurately to ensure smooth transitions and compliance with HR policies.

# Technology and Architecture

Exploring the Advanced Technologies and Security Measures of Prismatic ERP



## .NET Core and Angular

Utilizes modern technologies for enhanced performance and user experience.



## IoT Integration

Enables seamless connectivity with IoT devices for real-time data exchange and analysis.



## Microservices Architecture

Adopts a modular approach for scalability, flexibility, and easier maintenance.



## Cross-Platform Compatibility

Ensures accessibility across various devices and operating systems, enhancing user convenience.



## SignalR

Facilitates real-time communication for interactive and responsive user interfaces.



## Security and Quality Measures

Incorporates robust security protocols and quality checks to safeguard data and ensure system reliability.

## INDUSTRY TRUST

# Industry Applications

Trusted by Leading Organizations in Various Sectors



### Papa John's

Utilizes Prismatic HRMS for streamlined operations and enhanced employee management.



### Al Fatah

Employs Prismatic HRMS for efficient workforce management and payroll processing.



### PNY Trainings

Adopts Prismatic HRMS to manage training schedules and employee performance evaluations.



### Gulab Devi Educational Complex

Uses Prismatic HRMS to handle staff records and academic scheduling effectively.



### Fast Engineering

Relies on Prismatic HRMS for project management and resource allocation.